

Timing belt set & water pump

THE "ALL IN ONE" SOLUTION



PRODUCT ADVANTAGES

- *Long service life and good reliability: our timing belt set and water pumps have been designed to meet the same requirements as the original equipment*
- *1 full kit = easy to identify, easy to assemble, optimised price*

With a range of **over 65 products**, the Eurorepar range of Timing belt set and water pumps has been developed to meet the needs of the market.

A significant number of engines contain a water pump that is driven by a timing belt.

As a precaution, we recommend that you change the other components at the same time that the belt is replaced.

It is important not to overlook the connection between the belt drive system and the water pump.

CONTENT OF THE KIT

The Eurorepar timing belt set and water pump contains the following:

- A water pump
- One or several belts,
- One or several tensioners,
- One or several idler pulleys,
- Accessories that are required for assembly (screws, seals, nuts, etc.),
- Generic assembly instructions (paper format),
- Mileage sticker.

The "All in One" Super Kit ensures the following:

- The **technical compatibility** of components,
- A **clear commercial offer that is easy to sell** with one part number per application;
- It is **easy to find individual products** using the engine or original part code.

DID YOU KNOW?

Assembling a new belt on the drive, guidance or tension systems may lead to noise or coolant leaks which may pollute the belt or tensioners and may even cause a breakage in the drive system.

CONDITIONS FOR REPLACEMENT

- Follow the manufacturer's recommendations,
- **Timing equipment should be replaced** if any engine warning lights are displayed or in the event of suspicious noises.
- A defective timing belt or tensioner may prevent the water pump from working.
- A leaking water pump may lead to a premature breakage of the belt or tensioner.

Our parts are guaranteed for **2 years***



SECURE LABELS

Avoids any risk to fake parts and guarantees their quality.



www.eurorepar.com

Our parts are guaranteed 2 years* against any manufacturing or material defect**.

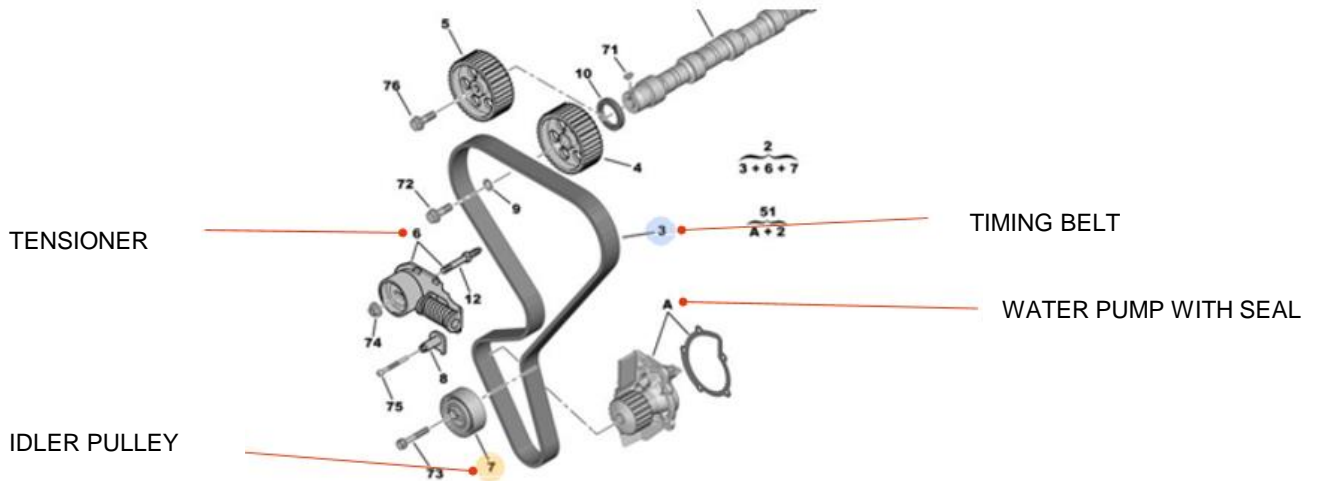
(*) For Citroen, DS, Peugeot, Euro Repar Car Service repair networks: the warranty runs for 2 years, parts AND labour included.

(**) For the conditions of application, contact your dealer.

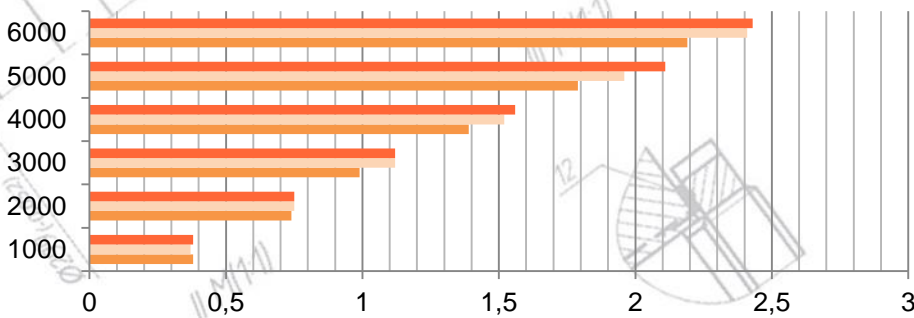


COMPONENTS

The timing belt set and water pump is made up of 4 components:



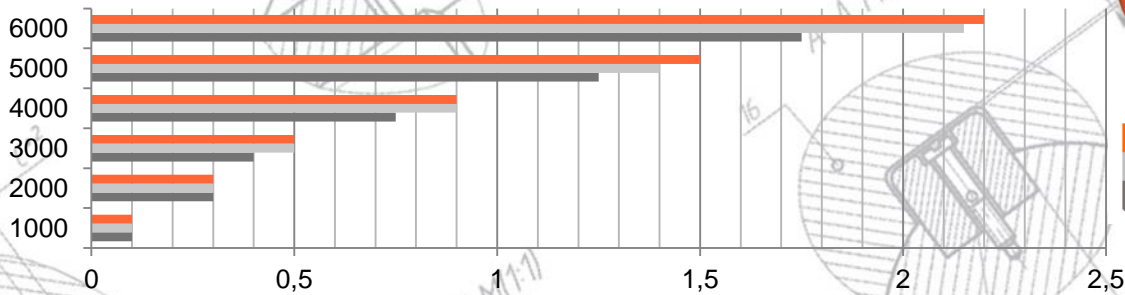
WATER PUMP FLOW RATE



+12% vs. Concurrent EQT

■ EUROREPAR
■ Original part competitor
■ Parts manufacturer competitor

PUMP PRESSURE ACCORDING TO ENGINE REVOLUTIONS



+12% vs. Parts manufacturer competitor

■ EUROREPAR
■ Original part competitor
■ Parts manufacturer competitor

DID YOU KNOW?

The high pressure of Eurorepar water pumps allows for excellent general engine cooling performance.



affectation table

